

This Week's Goals

- Continue work on circuit
- Design testing prototype
- Order Materials
- Begin work on Midsemester Presentation

Project Difficulties

The team has yet to encounter any difficulties.

Activities:

Sarah – Advisor meeting	30 min
Client Meeting	45 min
Circuit Work	1 hr
Progress Report	45 min
Group Meeting	30 min

Victoria – Client Meeting	45 min
Circuit Work	1 hr
Design Matrix	75 min
Group Meeting	30 min

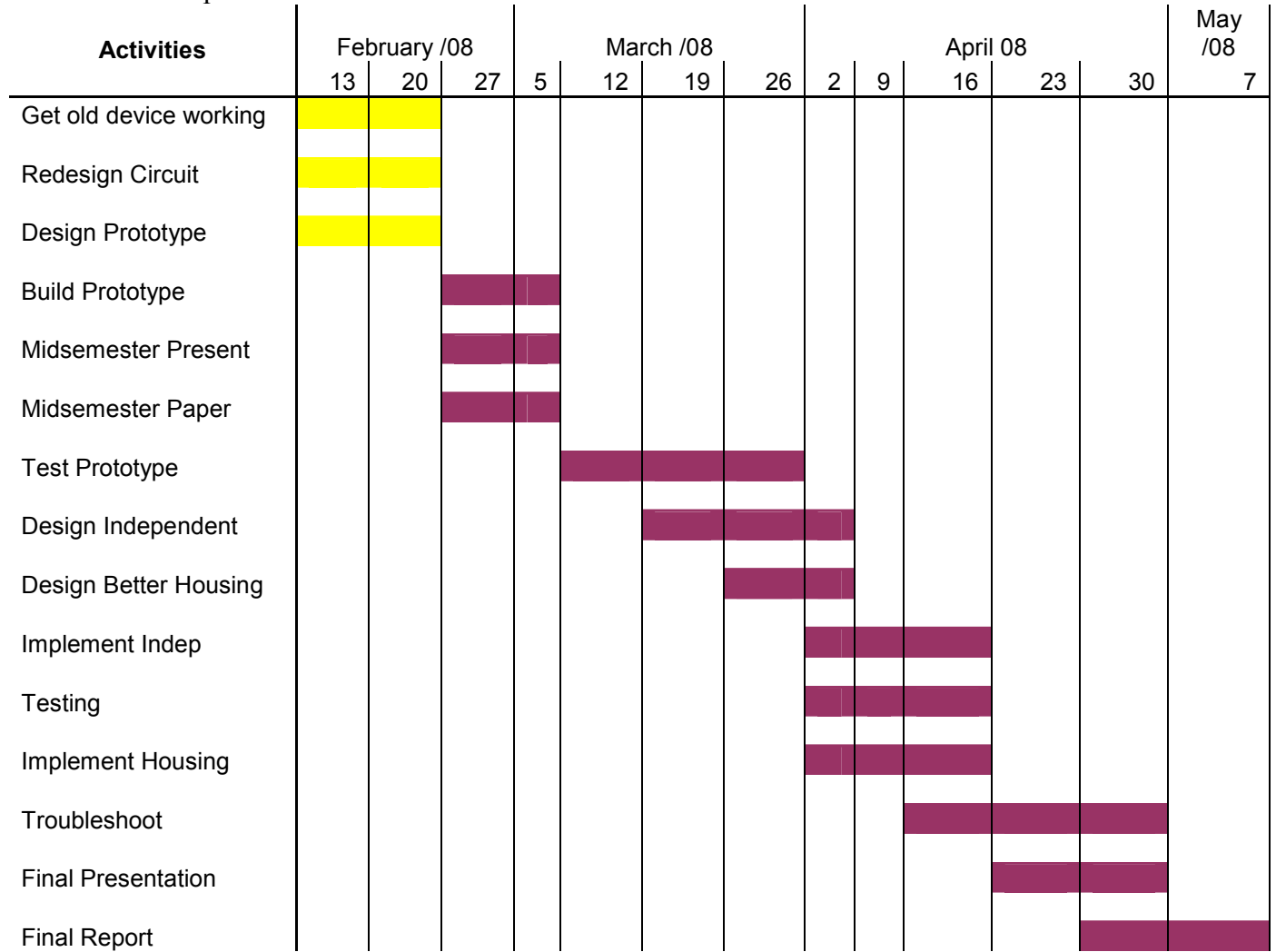
Rachel – Advisor meeting	30 min
Client Meeting	45 min
Individual Research	2 hr
Group Meeting	30 min

Team Total Hours for this week: 10.75

Cumulative Team Hours to date: 37

Project Schedule

The purple sections are projected work. The yellow sections are in progress, and the green sections are completed.



Design Matrices

For the Housing Designs:

CRITERIA	WEIGHT	Box	Flat Box	Dome
Aesthetics	25	0.1 (2.5)	0.4 (10)	0.5 (12.5)
Durability	25	0.37 (9.25)	0.33 (8.25)	0.3 (7.5)
Space for LEDs and Circuitry	25	0.33 (8.25)	0.33 (8.25)	0.33 (8.25)
Comfort	15	0.2 (3)	0.35 (5.25)	0.45 (6.75)
Machinability	5	0.5 (2.5)	0.4 (2)	0.1 (0.5)
Cost	5	0.2 (1)	0.4 (2)	0.4 (2)
TOTAL	100	26.5	35.75	37.5

For Clear Plate:

CRITERIA	WEIGHT	NOA61	Acrylic	Glass
Safety	35	0	0.7 (24.5)	0.3 (10.5)
Weight	25	0.3 (7.5)	0.5 (12.5)	0.2 (5)
Cost	15	0.1 (1.5)	0.4 (6)	0.5 (7.5)
Refractive Index	15	0.3 (4.5)	0.3 (4.5)	0.6 (9)
Machiability	10	0.2 (2)	0.5 (5)	0.3 (3)
TOTAL	100	15.5	47	35.5